

NEW IDEAS

FOR

KC

M

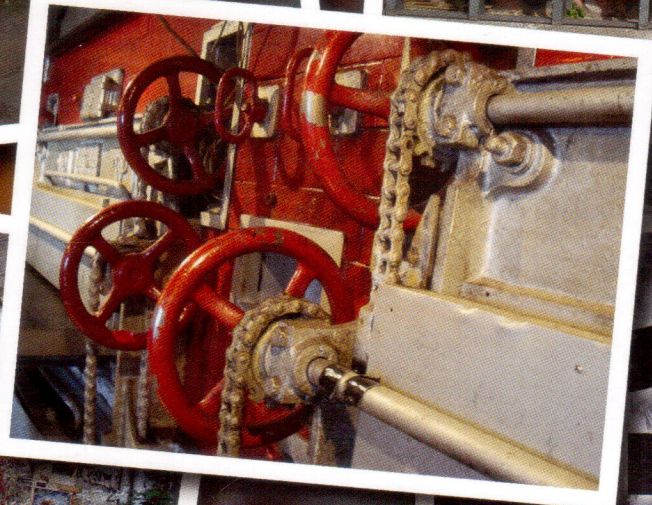
A

S

C

E

A



HLADILNICA

The facility Hladilnica was built in 1897 as a warehouse for oats and cans. The outline is built to fit the purpose: a simple floor plan, structurally optimised and adapted for loading and unloading storage goods.

Computer recycling

Live venue

Workshop

Social club

Exhibition

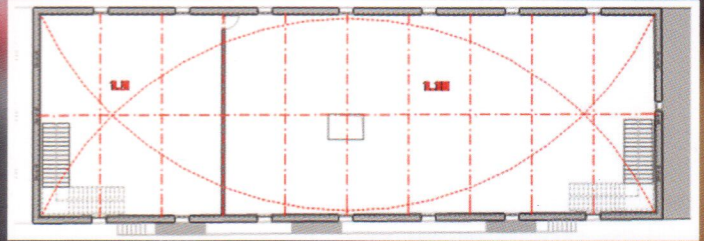
Skate hall



ground floor plan



1st floor plan



MC

The facility MC was built in 1897 as a toast bakery. Initially a simple design, the original ground plan was later changed beyond recognition with several partition walls, changes to the windows and facade, and several extensions.

Exhibition

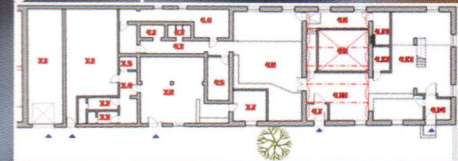
Social club

Live venue

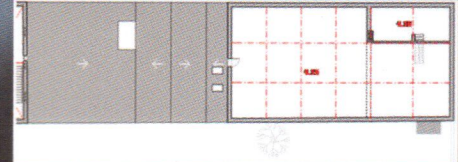
Youth centre



ground floor plan



attic floor plan



GARAŽA

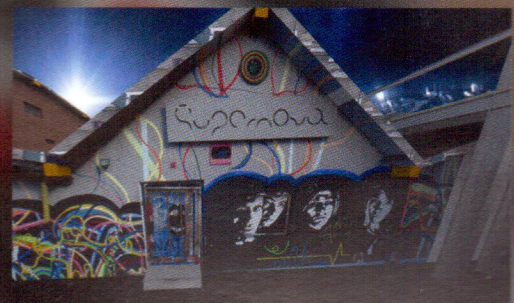
South of Hladilnica, several smaller extensions have been built subsequently - sheds with pent roofs.

SUPERNOVA

Supernova is located further south of Garaža in the same set.

Herbal healing

Jam sessions

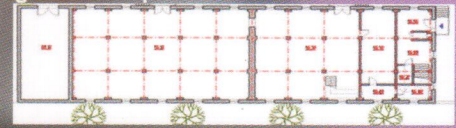


LUBADAR

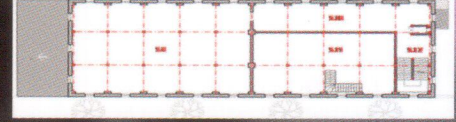
The facility Lubadar was built in 1902 as a flour warehouse. Its present name refers to the construction; external walls and central transverse wall are made of brick, the rest of the construction forms a grid of wood pillars and beams. The building has a ground floor and 3 additional storeys.

- Book store** **Free climbing**
- Art studios** **Workshop**
- Bands** **Recording studio**

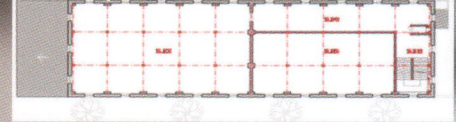
ground floor plan



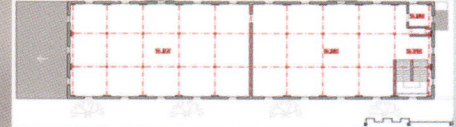
1st floor plan



2nd floor plan



attic floor plan

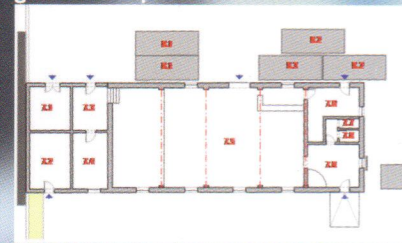


GUSTAF

The facility Gustaf was built as a warehouse. As a result, the building has no internal barriers and is functionally undifferentiated. The structure has been modified at least once, when the roof was raised a floor higher.

- Live venue** **Theater**
- Clubbing**
- Art welding** **Flee market**

ground floor plan



attic floor plan



ADMINISTRATION BUILDING

Hostel Info Administration
Youth centre Science lab NGO's



OLD BUILDINGS



Co-funded by the Europe for Citizens Programme of the European Union



NEW IDEAS FOR OLD BUILDINGS, 2016
Designed by Simon Fabjan & Ramiz Derlić
Plans by Sašo Rek, text & photos by KC
Pekarna, visualisation by Štef Varga.